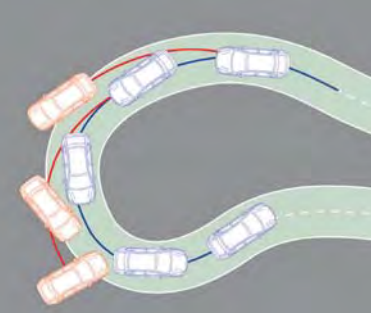


## Introducing the revolutionary all-new Ford Fiesta

The all-new Ford Fiesta is powered by a first-in-its class 1.6L Duratec Ti-VCT engine with Powershift® 6-speed Dual Clutch Automatic Transmission made for unprecedented driving exhilaration. This award winning model has sold over 1 million units worldwide.

### Responsive power and handling

The responsive and efficient 1.6L Duratec twin independent variable-cam timing (Ti-VCT) engine and POWERSHIFT® 6-SPEED DUAL CLUTCH AUTOMATIC TRANSMISSION, POWERTRAIN 122PS @6300rpm TORQUE OF 152Nm@4050rpm. Combined with standard safety features like ESP, TCS, ABS and EBD, the Ford Fiesta gets you there faster and safer.



### Electronic Stability Programme (ESP) with Traction Control (TCS)

The ESP and TCS work together to eliminate wheel slips and improve traction to give you total control and confidence in any driving condition.

### SEDUCTIVE CENTRE CONSOLE AND INTERIOR

Inspired by ergonomic mobile phone designs, the centre console is the embodiment of beauty, form and functionality. Incorporating Ford Kinetic Design elements with high-quality materials and detailing, the interior blends harmoniously with the sleek and sophisticated lines of the exterior.

### STEERING WHEEL AUDIO CONTROL

Ergonomically designed to let you experience intuitive control at your fingertips on the steering wheel while you drive.

### FRONT PASSENGER SHOE STORAGE

Stylish and well thought out storage spaces that maximises interior space without compromising beauty, form or function.

### A WINNER AROUND THE WORLD

The Ford Fiesta has won many hearts and awards for its stylish ergonomic design and functionality throughout Europe, Asia Pacific and Africa.



### Bluetooth® with Voice Control

Integrates wireless communication devices with your car and uses voice control to let you change radio stations, CD, iPod and MP3 tracks. And make calls using voice recognition.



### POWERSHIFT® 6-SPEED DUAL CLUTCH AUTOMATIC TRANSMISSION

Whether you need the power to accelerate or to go the distance, it is engineered to connect you to the car by delivering torque to the wheels at all times. It is also equipped with a leak-free dry clutch technology and a neutral idle mode to help reduce drag and improve fuel efficiency.



**POWERTRAIN 122PS @6300rpm TORQUE OF 152Nm @4050rpm**

### Ford Kinetic Design

Designed to project boldness, confidence and individuality, every aspect of the Ford Fiesta employs the award-winning Ford Kinetic Design to impart driving dynamics, sporty looks and maximum space. Its sleek and bold design delivers a smooth aerodynamic shape that increases fuel efficiency and minimising noise, vibration and harshness (NVH).



### SMART HOME SAFE TECHNOLOGY HEADLAMPS

An intelligent and unique feature that uses the Home Safe Technology to illuminate your path till you get to the door safely.



### 16-INCH ALLOY WHEELS

Specifically selected for its bold and futuristic design that captures movement and light, and delivers maximum performance.

- Keyless Entry • ESP + TCS • Dual SRS Airbags • ABS with EBD • Electronic Power Steering
- Audio system with USB connectivity • Fog-lamps and rear spoiler



### COLOURS



COLOURS	CHILLI ORANGE	COOL WHITE	METROPOLITAN GREY	BLACK MICA	TRUE RED	AURORA BLUE	HIGHLIGHT SILVER	SPARKLING GOLD	PHANTOM BLUE	PHANTOM PURPLE
5-dr Hatchback 1.6L Automatic (Sport)	●	●	●	●	●	●	●	●	●	●
4-dr Sedan 1.6L Automatic LX		●	●	●			●	●	●	

Standard Equipments		5 Door	4 Door
Body Style		1.6L Automatic with PowerShift®	1.6L Automatic with PowerShift®
Powertrain		Sports	LX
Grade			
<b>EXTERIOR</b>			
Halogen Twin Chamber headlamps w/ Follow-me-home		S	S
Door mirror with indicator lights		S	S
Powered foldable side mirror		S	S
Rear fog lamp		S	S
Front fog lamp		S	-
Variable intermittent wiper		S	S
Rear intermittent wiper		S	-
Body color door handle, side mirrors, trunk garnish		S	S
Rear spoiler with HMSL		Sport Type	-
Sport front lower grille w/chrome surround		S	-
Sport rear bumper		S	-
Sport tuned suspension		S	-
Standard suspension		-	S
15" steel wheel with cover		-	-
Alloy wheel 16"		S	-
Alloy wheel 15"		-	S
Spare Wheel 14"		S	S
<b>INTERIOR</b>			
Power windows w/driver's side auto one-touch		S	S
Power door mirror		S	S
Tilt Adjustable - Electronic Power Assisted System (EPAS)		S	S
Leather wrapped steering wheel		S	-
PU steering wheel		-	S
Flip type remote key		S	S
Central 2 line multi-function display		-	S
Central large screen dot-matrix multi-function display		S	-
Fuel computer		S	-
Manual Climate Control		S	S
Single disc indash MP3 compatible audio system		S	S
Auxiliary Input		S	S
Speakers		6	6
USB Connectivity		S	S
Bluetooth & Voice Control Functions		S	S
Steering Wheel audio control		S	S
Seat material		Fabric	Fabric
Front seat	Mechanical driver's seat	S	S
	Seat back map pocket	S	S
	Front sport seat	S	-
Rear seat	Seat back with dual headrest	S	S
	Foldable 60:40	S	S
Interior lighting	Theatre Dimming	S	S
	Map light	S	-
	Footwell lighting	S	-
Storage	Front passenger under seat shoe stowage	S	S
	Center console cup holder	S	S
Carpet Mats		S	S
<b>SAFETY &amp; SECURITY</b>			
Laminated front wind shield		S	S
Side door impact bar		S	S
Rear defroster		S	S
Central locking system		S	S
Height-adjustable front seatbelt anchors		S	S
Driver & Passenger Airbag		S	S
Safety belts with Emergency Locking Retractor & Pretensioners (ELR)		S	S
ISOFIX Child seat anchorage		S	S
Electronic Brakeforce Distribution (EBD)		S	S
EBA Anti-lock Braking System (ABS)		S	S
Electronic Stability Program (ESP)		S	S
Traction Control System (TCS)		S	S
Easy Fuel® - non locking capless fuel filler system		S	S
Keyless entry system		S	S
Perimeter Alarm with engine Immobilizer		S	S
Emergency Hazard Warning Light Activation		S	S
Parking aid sensors - Rear		S	S
High mount stop lamp		S	S

Remark: S = Standard Equipment, -- = Not Available

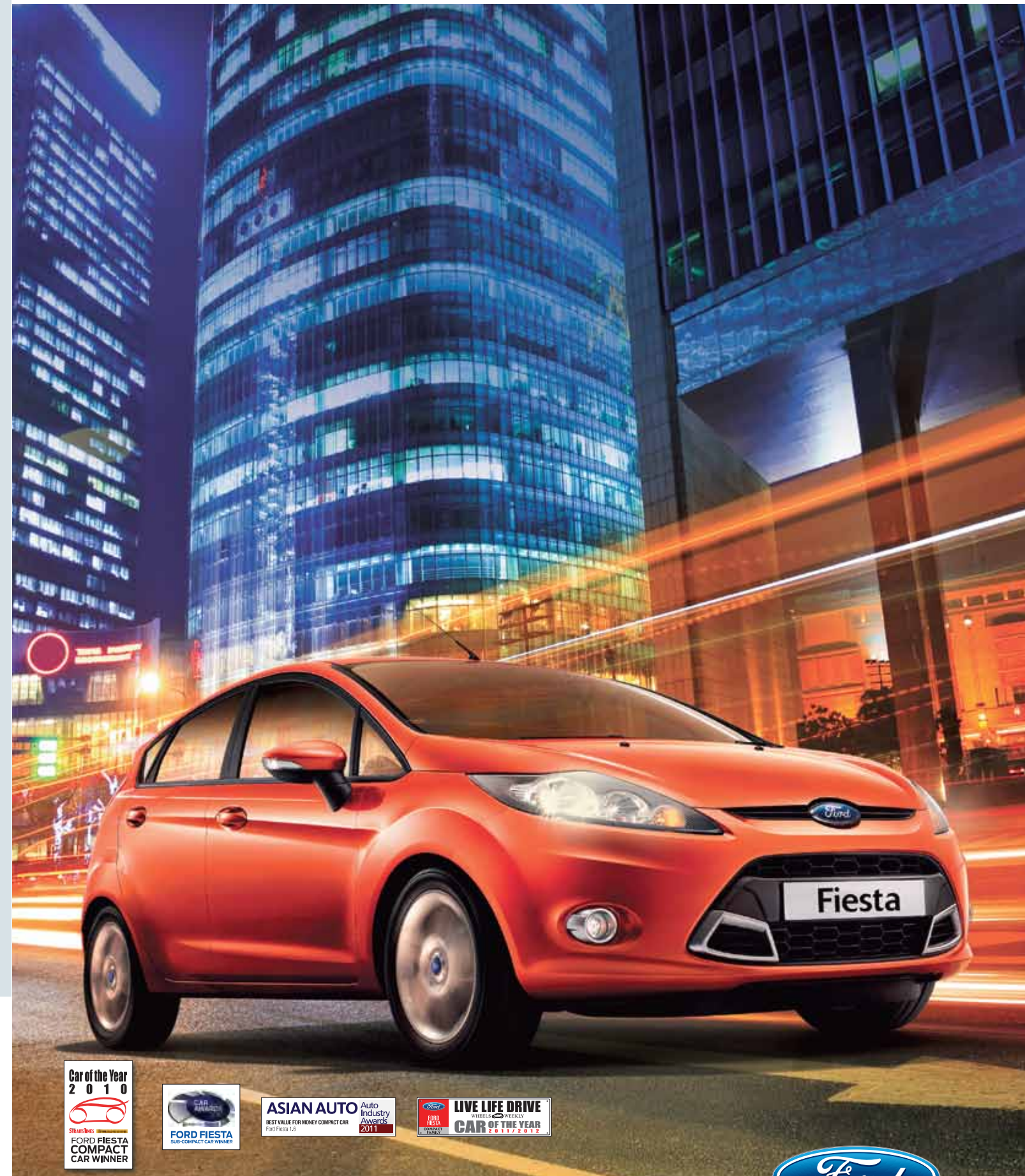
Technical Major Specification		
Body Style	5 Door	4 Door
Model Code	DR74RAB	DPOBRAD
Powertrain	1.6L Automatic with PowerShift®	1.6L Automatic with PowerShift®
Grade	Sport	LX
<b>DIMENSION &amp; WEIGHT</b>		
Length (mm.)	3,950	4,291
Width (mm.)	1,722	1,722
Height (mm.)	1,475	1,475
Wheelbase (mm.)	2,489	2,489
Front track (mm.)	1,478	1,478
Rear track (mm.)	1,465	1,465
Min.turning radius (m.)	5.1	5.1
Kerb weight (Kg.)	1,153	1,171
<b>ENGINE</b>		
Model	1.6 Duratec TI-VCT	1.6 Duratec TI-VCT
Type	4 Cylinder DOHC 16V	4 Cylinder DOHC 16V
Displacement (c.c)	1,596	1,596
Bore x stroke (mm.)	79.0 x 81.4	79.0 x 81.4
Compression ratio	11:1	11:1
Max. output PS / (rpm)	122 (90 KW)/6300	122 (90 KW)/6300
Max. torque Nm / (rpm)	152/4050	152/4050
Fuel system	Multi-Point Electronic Fuel Injection	Multi-Point Electronic Fuel Injection
Fuel tank capacity (Litres)	42	42
<b>TRANSMISSION</b>		
Clutch	Dual Dry Clutch	Dual Dry Clutch
Type	PowerShift® 6 Speed Automatic	PowerShift® 6 Speed Automatic
Gear ratio		
1st	3,917	3,917
2nd	2,429	2,429
3rd	1,436	1,436
4th	1,021	1,021
5th	0,867	0,867
6th	0,702	0,702
Reverse	3,507	3,507
Final gear ratio	--	--
<b>STEERING</b>		
Type	Rack and Pinion w/ Electronic Power-Assisted System	Rack and Pinion w/ Electronic Power-Assisted System
<b>SUSPENSION</b>		
Front	Macpherson Strut with Anti-Roll Bar	Macpherson Strut with Anti-Roll Bar
Rear	Twist Beam	Twist Beam
<b>BRAKE</b>		
Front	Ventilated Discs	Ventilated Discs
Rear	Drum	Drum
<b>TYRES SIZE</b>		
Front & rear	195/50 R16	185/55 R15



• Colours shown on printed leaflet provide a representation of the colour and may vary on actual vehicle  
 • Terms and Conditions apply • Sime Darby Auto ConneXion Sdn Bhd reserves the right to make changes in terms of accessories level and prices at any time without prior notice.



Dealer's Stamp



Feel the difference